

# MODEL F-4000 SPECIFICATIONS



**WATERFREE URINAL  
VITREOUS CHINA**



**SEALED CARTRIDGE**

## DESCRIPTION

The Falcon model F-4000 vitreous china wall hung, wall outlet waterfree urinal. The urinal complies with ANSI/ASME A112.19.2M-1998 and A117.1 (Section 605.2) for vitreous china fixtures and with IAPMO IGC 161-2000 and CSA.

## SPECIFICATIONS

- Vitreous china fixture
- Housing (H-1, Mod. 3)
- Cartridge kit\*
- One piece wall bracket with anchors
- Uni-coupler
- Drain line test cap
- Instruction sheet

\*Additional cartridges sold separately

## COLORS

Standard white; available in other colors

## NOMINAL DIMENSIONS (W x H x D)

15.375 x 22.625 x 14 inches [ 391 x 575 x 356 mm ]

## APPROXIMATE WEIGHT

35 lbs. [ 15.8 kg ]

## COMPLIANCE CERTIFICATIONS

Meets ANSI/ASME A112.19.19-2006 for vitreous china non-water urinals. Meets the American Disabilities Act guidelines and ANSI A117.1 for accessible and usable buildings and facilities. Complies with International Plumbing Code and National Standard Plumbing Code.



## H1 HOUSING (H-1, MOD. 3)

The factory installed housing is comprised of a bowl with a tailpiece and a mounting flange of 316 Stainless Steel. It is sealed into the bowl drain opening by a profile gasket made of a synthetic rubber. The housing and gasket are compressed into the drain opening by the installation of a retaining nut, and a friction washer.

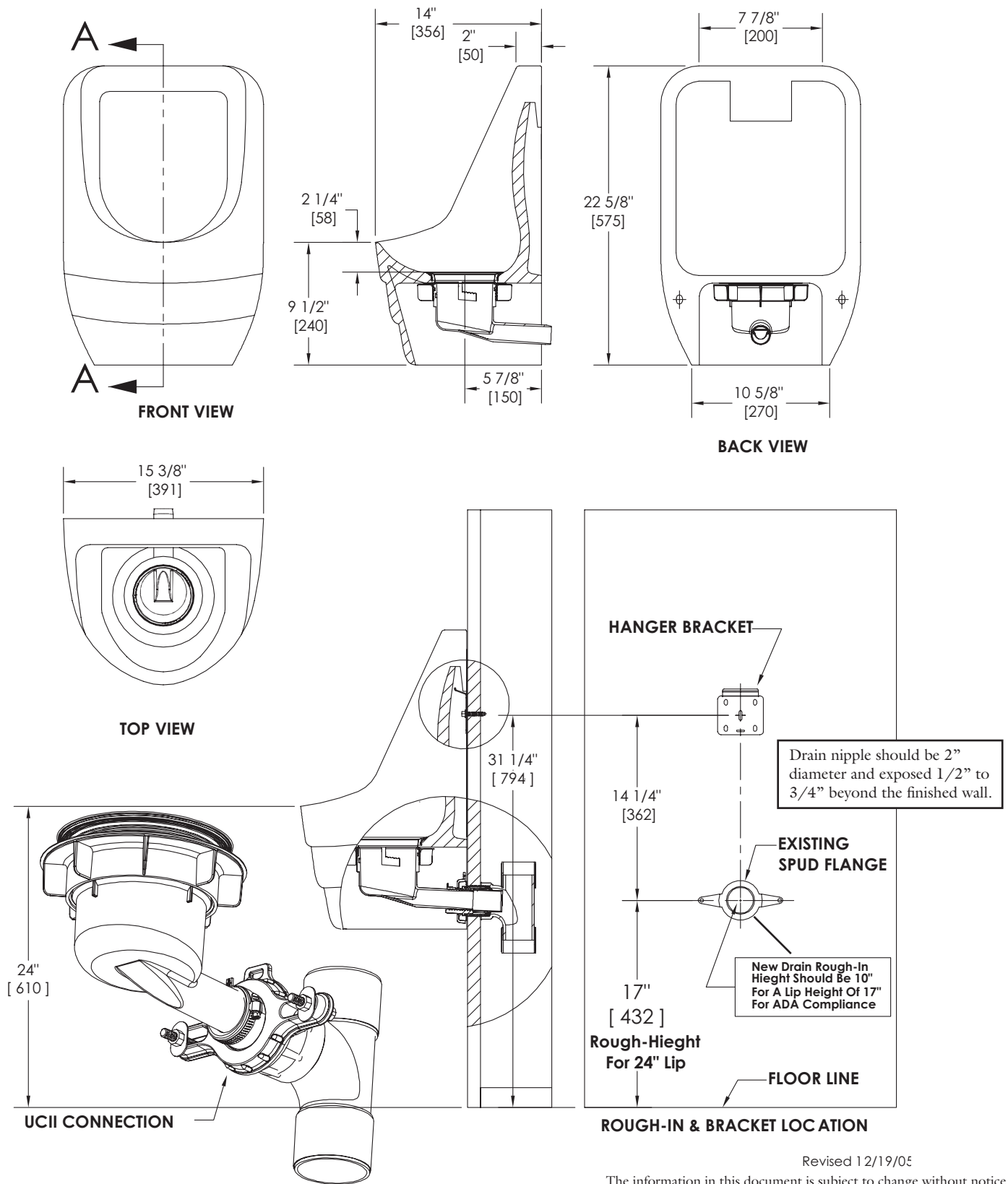
## CARTRIDGE KIT

The patented cartridge is engineered to last for an average of three to four months in typical installations and to receive urine through drain holes. Urine passes through an immiscible layer of biodegradable sealant, continues through a siphon trap system, and flows out through a baffle to prevent the loss of sealant. A discharge tube in the housing directs the flow of urine into the building drain system. The cartridge is designed as a replaceable component when its function has been exhausted.

## UNI-COUPLER

The housing is connected to the building drain system by means of the Falcon Uni-coupler. The coupler conforms to NSF 14 for plastic pipes and fittings. It is designed to be used in both retrofit and new installations. It offers a variety of configurations which allow it to couple to most existing drain openings.

# MODEL F-4000 SPECIFICATIONS



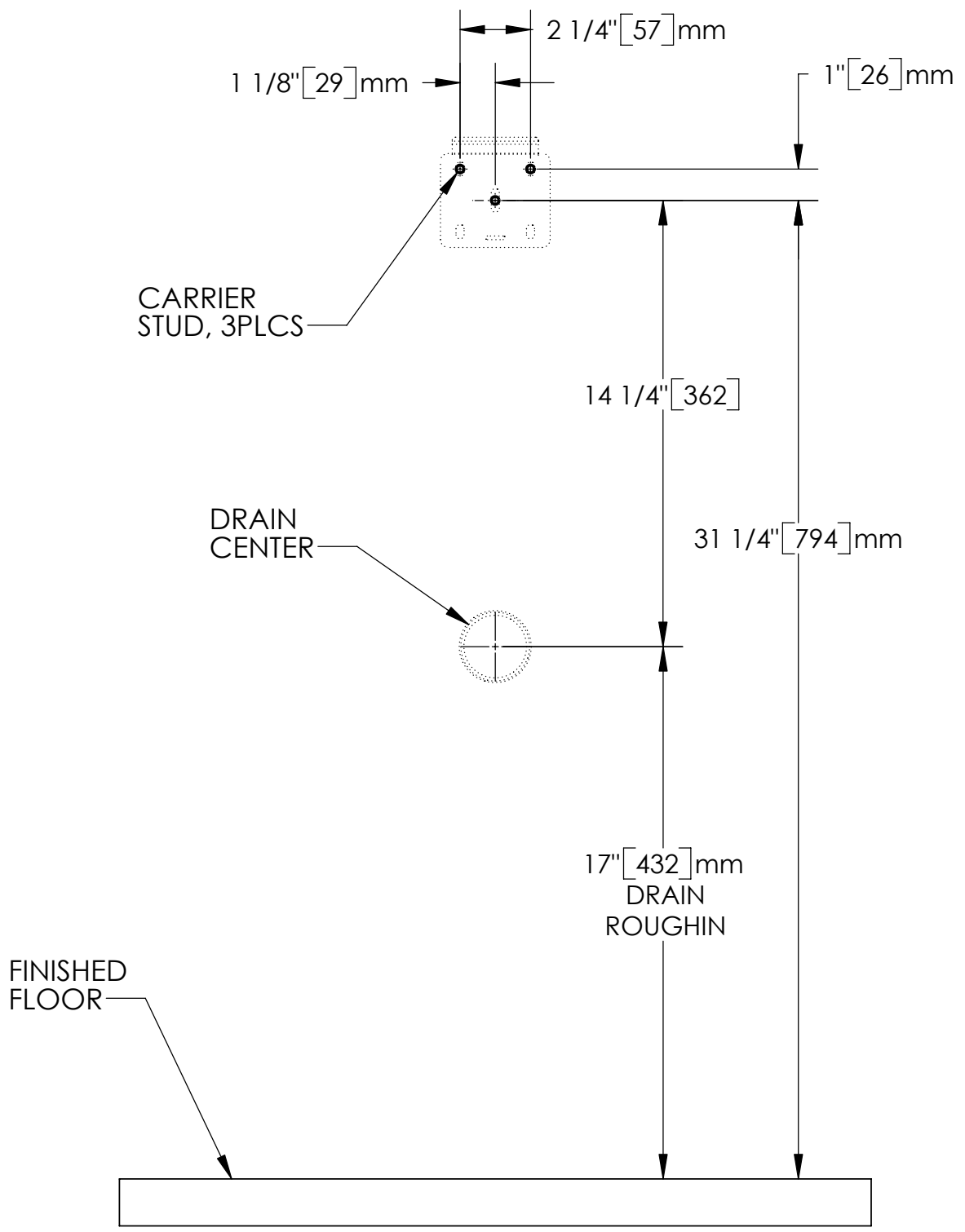
Falcon Waterfree Technologies, LLC  
 Tel: 866.275.3718 (toll-free) • Fax: 616.954.3579 • info@falconwaterfree.com

www.falconwaterfree.com



## F-4000 FIXED UNI-BRACKET CARRIER STUD PLACEMENT

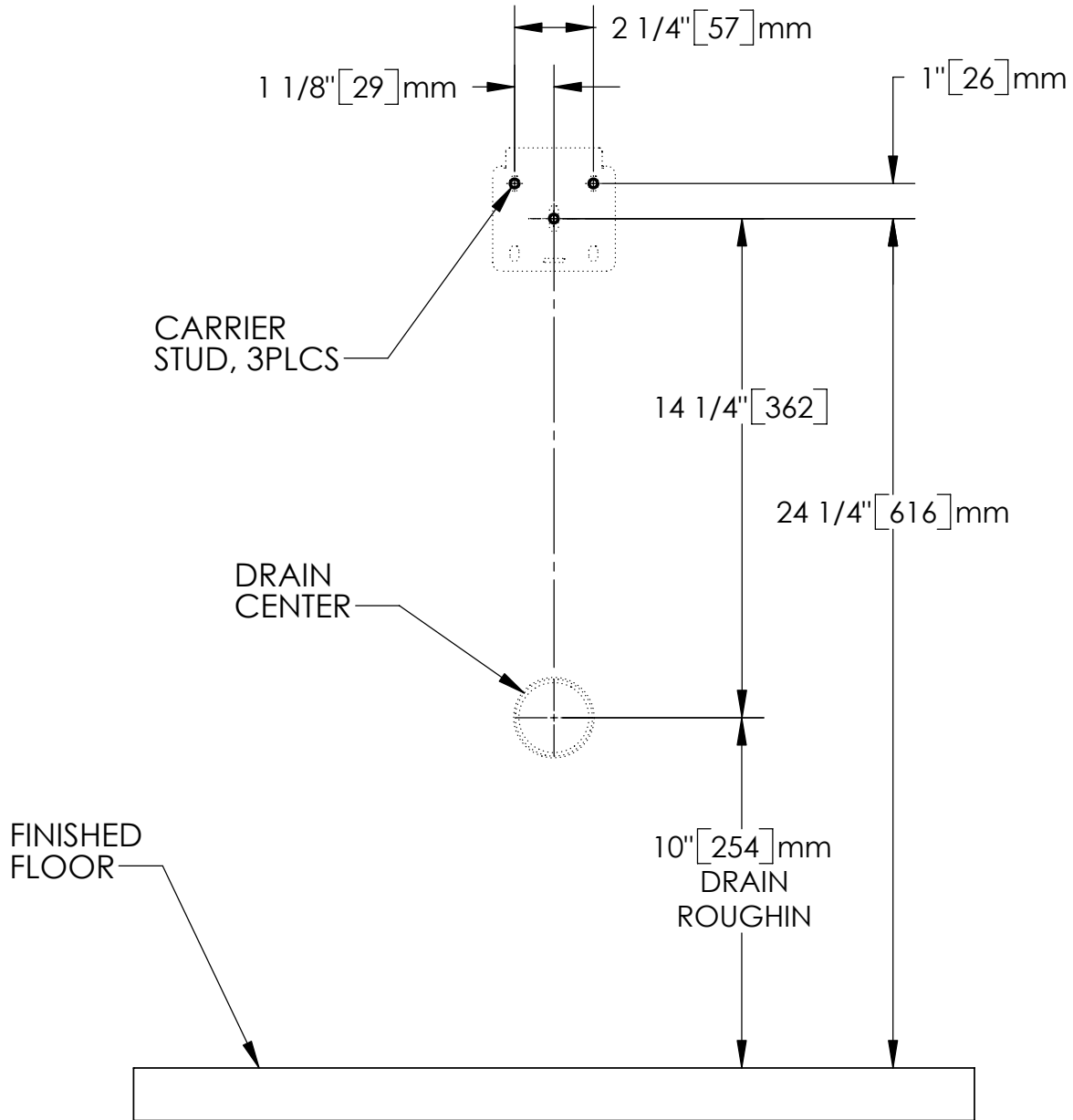
Note: Fractional dimensions are rounded to the nearest 1/16"  
Dimensions in (mm) are rounded to the nearest 1mm





## F-4000 ADA, FIXED UNI-BRACKET CARRIER STUD PLACEMENT

Note: Fractional dimensions are rounded to the nearest 1/16"  
Dimensions in (mm) are rounded to the nearest 1mm



Rev. 11/1/2006